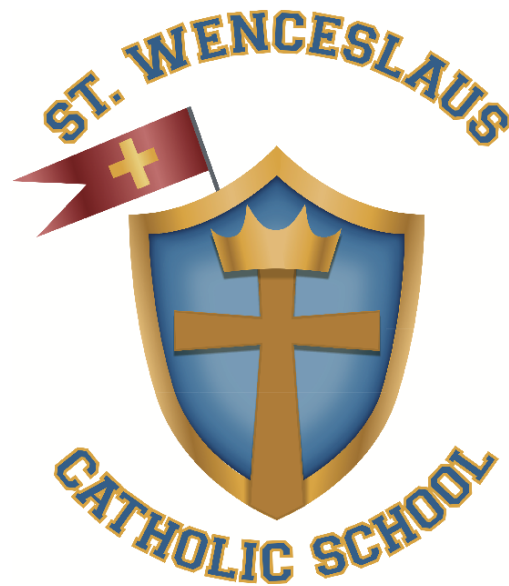


St. Wenceslaus Catholic School



Annual School Report 2023

St. Wenceslaus School

Mission Statement

St. Wenceslaus Catholic School is a Christ-centered family community committed to the intellectual and spiritual formation of our students. We provide a high-quality academic program that builds leadership and self-confidence while nurturing a loving relationship with God and encouraging service to others.

Philosophy

St. Wenceslaus Catholic School intentionally promotes a family-centered atmosphere. We create opportunities for students to build relationships with each other and for families to connect with the school community.

Faith is the foundation of our mission. It is the guiding force of our school's purpose and existence. We work to develop a relationship with God through participation in the rich traditions of our Catholic Church. We teach our students to have compassion and empathy for the needs of others and facilitate activities that cultivate a serving heart.

Our academic goal is to ignite the intellectual potential of each student. Academics are tailored to meet each student's needs and maximize their learning opportunities. Our school challenges and supports students to reach beyond their level of comfort so that they may become confident leaders and learners.

St. Wenceslaus School Personnel

Administration

Father Eugene Theisen	Pastor
Kim Doyle	Principal
Sherry Hartman	Office Manager
Joan May	Technologist
Lisa Langfield	Marketing/Events/Alumni Coordinator

Faculty

Sarah Gullickson	Preschool Director
Tammy Sirek	Preschool Teacher
Amber Heinz	Preschool Teacher
Annette Stavos	Preschool STEM /Library
Anne Schmitz	Preschool Teacher
Stephanie Tobias	Preschool Teacher
Val Kapphahn	Preschool Aide
Brandi Augeson	Kindergarten
Lisa Hathaway	Kindergarten
Abby Jenkins	1st Grade
Emilia Jury	1st Grade
Kathy Giesen	2nd Grade
Casey English	2nd Grade
Carly Bartolomaus	3rd Grade
Alyssa Neisen	4th Grade
Colin Smisek	5th Grade
Lori King	English and Literature 5-6
Michael Hess	6th Grade (Social Studies 6-8, Science 6)

Becky Zwirner	6th Grade (Math 6-8, Science 6)
Emily Shimota	7th Grade (6-8 Religion, Literature 6)
Jamie Schoenbauer	8 th Grade (English, Literature 7-8)
Bailey Turner	Physical Education
Katherine Gorr	Music
Suzanne Eidem	Art

Support Staff

Linda Smisek	Instructional Assistant Teacher
Teresa Rademacher	Instructional Assistant Teacher
Anita Sirek	Club House Director
Elaine Howell	Club House Assistant
Jackie MacDonald	Counselor

District 721 Support Staff

Michelle Redfearn	Special Education/Title I
Kelsey Weinandt	Speech

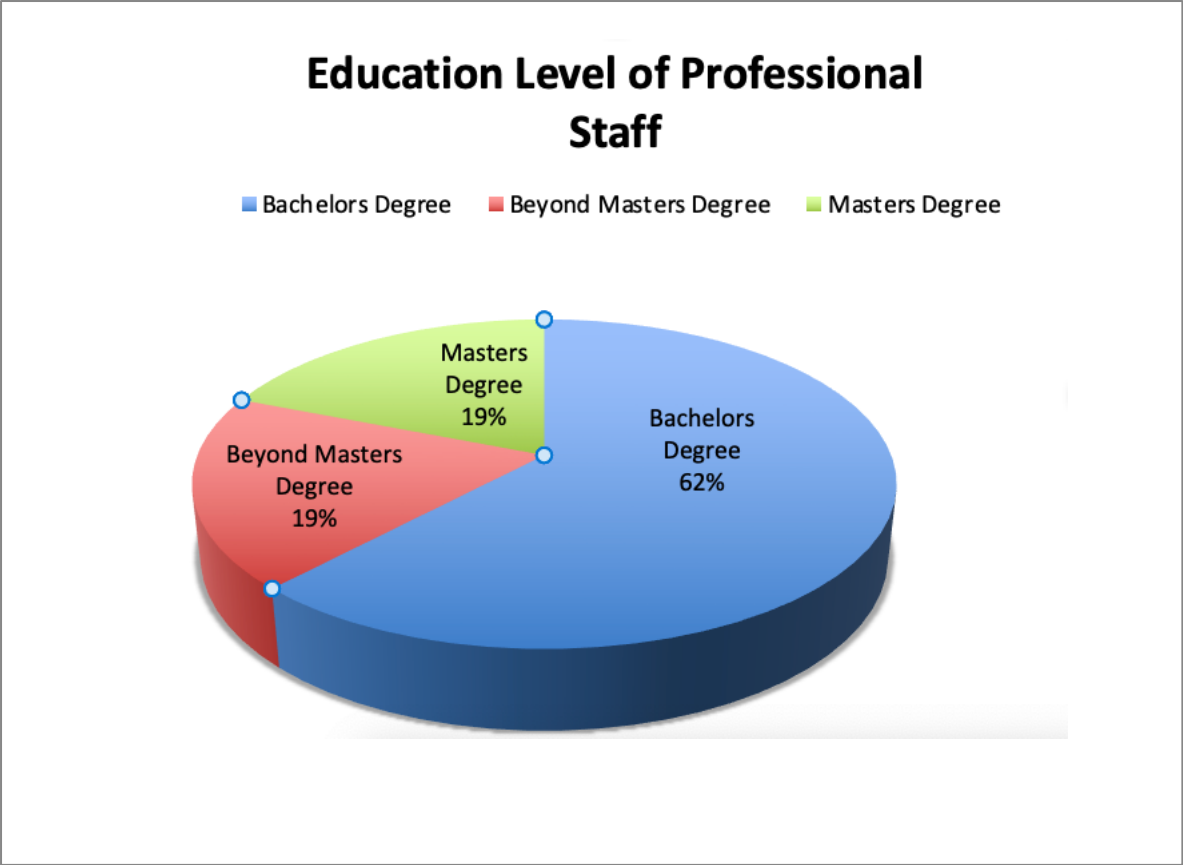
Kitchen

Katie Cleveland	Head Chef/Director of food Services
Samantha Gackenheimer	Kitchen Assistant
Lauren Weiers	Kitchen Assistant

Maintenance

Paul Maruska	Custodian
Steve Schmitz	Head of Maintenance

Professional Staff Education Level 2022/2023



St. Wenceslaus Catholic School - History of Enrollment

Enrollment	<u>2003- 2004</u>	<u>2004- 2005</u>	<u>2005- 2006</u>	<u>2006- 2007</u>	<u>2007- 2008</u>	<u>2008- 2009</u>	<u>2009- 2010</u>	<u>2010- 2011</u>	<u>2011- 2012</u>	<u>2012- 2013</u>
Preschool	0	0	0	0	28	18	39	50	39	49
Total K-8	377	384	376	348	321	307	270	252	243	224
Korean Students						12	11	8	9	5
Enrollment	<u>2013- 2014</u>	<u>2014- 2015</u>	<u>2015- 2016</u>	<u>2016- 2017</u>	<u>2017- 2018</u>	<u>2018- 2019</u>	<u>2019- 2020</u>	<u>2020- 2021</u>	<u>2021- 2022</u>	<u>2022- 2023</u>
Preschool	46	34	56	48	42	48	63	53	64	47
Total K-8	224	199	178	195	194	168	150	182	194	206
Korean Students	6	1	1	0	0	0	2	0	0	0

Curriculum and Instruction

St. Wenceslaus School provides an excellent opportunity for spiritual, academic, and social growth for children from preschool through grade eight. We welcome children of all religious backgrounds. Students from surrounding parishes without a Catholic school are welcome at St. Wenceslaus.

Established in 1878, our school serves 253 area students in 2022-2023. The average class size is 16 students. The school has 13 regular classrooms, as well as rooms for art, physical education, and a library. We also have a fully operational preschool program with three separate class sections and a daycare program for preschoolers and school-age children.

The school day begins at 7:30 AM and ends at 2:30 PM for kindergarten through grade 8 students. Preschool sessions are held for half day (9:00-12:00) or full day (9:00-3:00). The extended day for preschoolers is open from 7:00 am to 9:00 am and then again from 12:00 am to 5:00 pm every school day. Club House care is available every day from 2:30-5:00 Pm for students in kindergarten and above.

St. Wenceslaus School is fully accredited in Minnesota through the Minnesota Nonpublic School Accreditation Association (MNSAA) for kindergarten through grade 8. In addition, our preschool program is licensed by the Minnesota Department of Education. St. Wenceslaus is a STEM-focused school.

Curriculum Areas are taught every day.

- Religion
- Language Arts
- Mathematics
- Science
- Social Studies
 - Art
 - Music
- Physical Education

Technology is used as a tool within each classroom. Students are taught to use various applications and programs in basic curriculum units. SWS is proud to supply devices for Preschool through grade 8 students. Laptop computers are available to grades 4-8, and I-pads are used in Preschool to grade 3.

STEM is a way of life at St. Wenceslaus Catholic School. We operate within the parameters of STEM Infusion, meaning that STEM philosophy is incorporated into all curricular areas and is not taught as a separate content area. Students are introduced to see themselves as positive learners with our growth mindset goals. Every grade level does engineering projects, photography and video skills, technology skills, and citizen science using the outdoors as a classroom. Students work in collaborative groups often and are allowed to try, repeat and try again as they learn. STEM includes creativity, collaboration, critical thinking/problem-solving, and communication skills.

Middle School

St. Wenceslaus School's middle school program begins in 6th grade. Middle school students are exposed to various academic and enrichment experiences. Teachers work in specialized curricular areas. Students are placed in elective courses for one period per day. These elective classes meet the various interests of the students.

Elective Courses - Grades 6-8

- Film Making
- Team Sports
- Foods
- Pottery
- Strategy Games
- Girls Choir
- MN History
- Acting
- Performing Arts
- Art
- Foods
- Show Choir
- Yearbook
- Needlecraft
- Boys Choir
- War/Boot Camp
- Math Help 8
- Math Help 7
- Robots
- Book Club
- Books/Movies
- Photo Technology
- Girls Sports
- Boys Sports

Co-Curricular Activities

St. Wenceslaus Catholic School offers co-curricular activities. Students in 6-8th grade can also participate in co-curricular activities at New Prague Middle School.

Co-curricular activities offered at St. Wenceslaus School:

Girls Volleyball

Girls Basketball

Boys Basketball

Geography Bee

Spelling Bee

STEM Competition

Lego League Competition

Regional Science Fair

Math League

Buddies and School Family Groups

With the buddy program, students learn to work with each other as a school community. Various grades pair up together for a variety of activities each year. For example, students in grade 6 develop buddies with the students in grade 2 and help support their first communion sacrament.

Family groups have been a highlight with the students. The eighth-grade students are the leaders of the family groups, and there are students from every grade level in each family. These multi-age groups work on projects together each month. The family groups solidify the community atmosphere at SWS.

Little Saints Preschool

St. Wenceslaus School preschool program serves 47 students ages 3-5.

Students one year away from kindergarten are in the 4-5 class called Prekindergarten. PreK students attend a program on Monday, Wednesday, and Friday or attend five days per week. These students also have the option to come Tuesday and Thursday for Pre-K STEM class.

There are two sections of prekindergarten.

Students in the 3-4-year-old program attend on Tuesdays and Thursdays and can choose the half-day or the full-day option. Little Saints is fully licensed through the Minnesota Department of Human Services.

Clubhouse Extended Daycare Program

Students who need daycare after school hours attend the Club House Program. Club House is open from 2:30 PM- 5:30 PM. Club House is available full-time on non-school days and in the summer. Club House is a safe and affordable program to meet the needs of working school families.

Special Services

As part of our philosophy, St. Wenceslaus School is committed to meeting the academic, social, and emotional needs of students. We work with the special services team from New Prague Public Schools to assess and serve the unique learning needs of students. The classroom teachers are also responsible for implementing accommodations and supporting individual learner needs to the best of their ability.

- Special Education Services and Speech/Language Services (IEP)
- 504 Plans
- Intervention Plans
- Title 1
- Counseling

Assessment

St. Wenceslaus School believes an effective assessment system motivates students to learn, communicates with stakeholders, promotes school improvement, guides instructional decisions, and shares a common vision. Assessment tools and practices are varied, ongoing, authentic, and aligned with specific learning targets. Regular and descriptive feedback is provided to students, and all parents, to promote learning positively. Assessments are used to understand and positively motivate the students as individual learners. Information gathered is used to understand the relationship between the learner and their progress toward achieving learning goals.

NWEA Testing (MAP- Measures of Academic Progress)

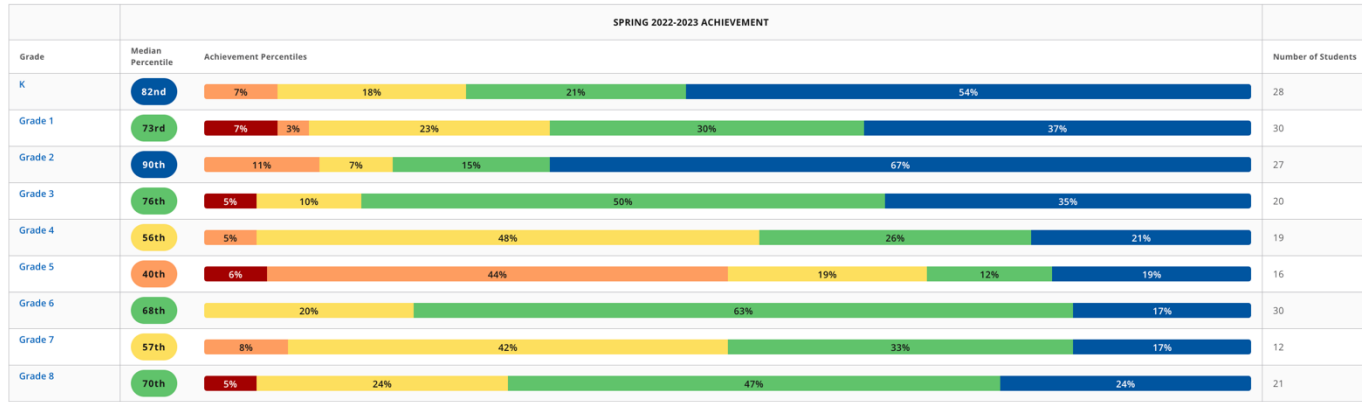
Students in grades kindergarten through 8 are tested 2-3 times during the school year. This test measures academic progress and gives individual student information to parents and teachers. The tests measure student progress and growth from one test session to the next. This test evaluates the school curriculum, the particular needs of an individual, class, or a condition of the entire school. NWEA Tests taken are in Fall, Winter, and Spring. Students have individual goals for improvement. NWEA gives students projected growth based on their ability levels. The goal is for students to move toward their projected growth goals as they work on meeting the curriculum standards.

The following charts show the spring 2023 Math, Reading, and Language assessment results.

The colors show each class's varied needs, which indeed identifies one of the challenges in our school in meeting the needs of all learners. As we compare to the tests taken in the fall and the spring, we can see growth and improvement, but we also need to set higher goals to bring those students who struggle up to a higher average.

Math

St. Wenceslaus Catholic School

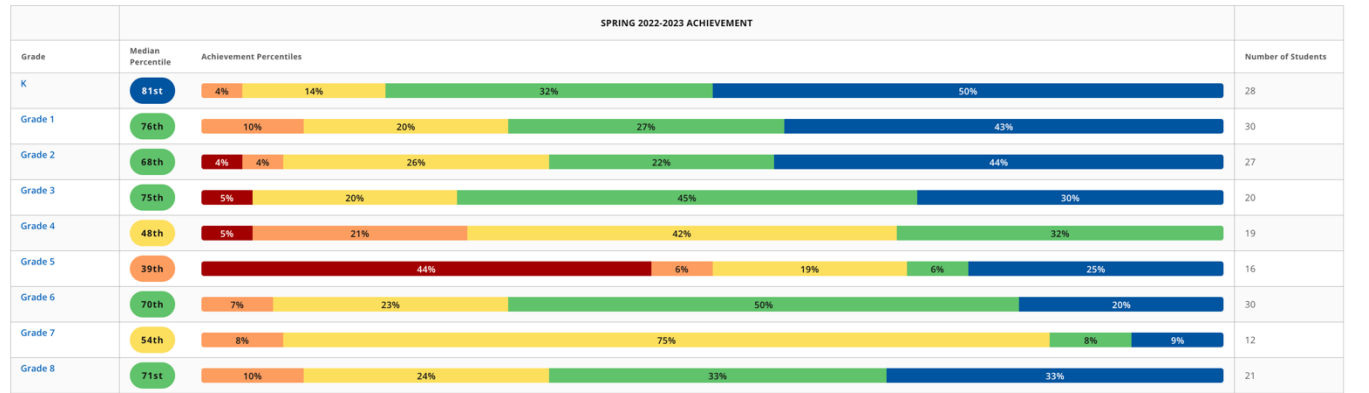


Percentiles Key: ● 1st to 20th ● 21st to 40th ● 41st to 60th ● 61st to 80th ● >80th

NWEA Confidential

Reading

St. Wenceslaus Catholic School

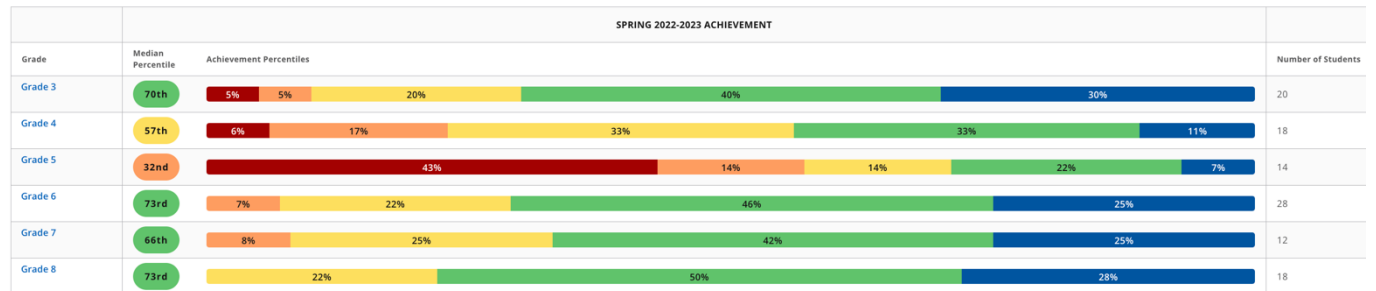


Percentiles Key: ● 1st to 20th ● 21st to 40th ● 41st to 60th ● 61st to 80th ● >80th

NWEA Confidential

Language Test for grades 3-8

St. Wenceslaus Catholic School



Percentiles Key: ● 1st to 20th ● 21st to 40th ● 41st to 60th ● 61st to 80th ● >80th

NWEA Confidential

Lexile® and Quantile® are trademarks of MetaMetrics, Inc., and are registered in the United States and abroad. The trademarks and names of other companies and products mentioned herein are the property of their respective owners. Copyright © 2023 MetaMetrics, Inc. All rights reserved.

2022-2023 Tuition

Preschool 3/4's and Prekindergarten

PreK Half-day MWF - \$2141

PreK Full-day MWF - \$3189

PreK Full-day M-F - \$5312

Kindergarten – Tuition adjusts based on the number of kids enrolled, with each family getting a \$50 lower rate for every student enrolled over 15 students.

Grade 1 – \$4,239 per student

Grade 2 – \$4,644 per student

Grades 3-8 – \$4,917 per student

2023-2024 Tuition

Preschool 3/4's and Prekindergarten

PreK Full-day MWF - \$3348

PreK Full-day M-F - \$5577

Kindergarten – Tuition adjusts based on the number of kids enrolled, with each family getting a \$50 lower rate for every student enrolled over 15 students.

Grade 1-2 – \$4,900 per student

Grades 3-8 – \$5,163 per student

Fundraising 2022-23

Required Fundraisers

- ❖ Marathon for Nonpublic education - \$150 per child K-8, \$50 preschool - October
- ❖ Sweepstakes - \$300 per family K-8, \$100 per preschool - January
- ❖ Fish Fry - 10 tickets per K-8 family, five tickets per preschool - March

Optional Fundraisers

- ❖ Handmade Market- October
- ❖ Pot-O-Gold - \$100 per ticket – One ticket given to each family - June
- ❖ School Auction and Dinner Event - March
- ❖ Golf Tournament - June

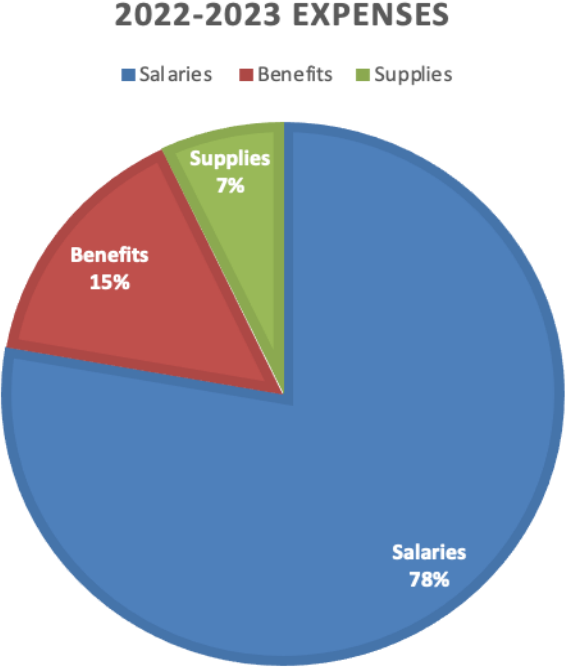
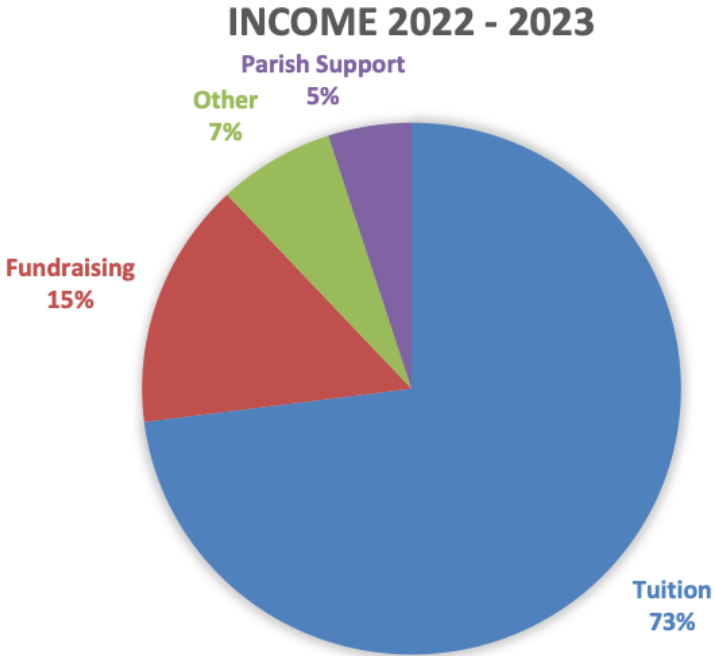
2023-2024

Pot-o-Gold will be a required fundraiser beginning in 2023. Each family will be required to sell or buy one Pot-O-Gold ticket.

Financial Aid

St. Wenceslaus School is committed to making our school financially accessible to everyone. Parents who wish to apply for financial assistance can fill out the online application for financial aid through TADS (Tuition Assistance Data Services). TADS processes all financial aid information and is strictly confidential.

School Operating Budget 2022- 2023 (Building & Maintenance costs not included)



Strategic Plan Goals for the 2022-2023

(OBJECTIVE 1) Our school curriculum will provide a relevant experience for our 21st Century learners.

(STRATEGY 1) Infuse STEM education into the curriculum.

Habits of Mind will be used to set the direction for the STEM curriculum.

(STRATEGY 2) Develop the faith of our students at a deeper level.

The IFG self-assessment/ACRE test will be incorporated into the annual evaluation of faith development for staff and students.

(STRATEGY 3) Review curriculum standards for quality programming.

Workshop days will be set aside during the school year, focusing on teachers working together on curriculum goals and standards and updating the school documents for curriculum.

(STRATEGY 4) Meet diverse learning levels, interests, and needs with cutting-edge curriculum goals.

Staff will research multi-age classrooms and their impact on curriculum decisions if enrollment requires it.

(STRATEGY 5) Develop the students into responsible citizens through the curriculum.

A multi-year plan for service learning will be developed.

Instill a growth mindset in our learners through STEM strategies.

(OBJECTIVE 2) Our school will meet the diverse needs of all learners.

(STRATEGY 3) Add additional programs to the school to meet the students' diverse interests.

Consider after-school clubs.

(OBJECTIVE 3) St. Wenceslaus School will attract students and benefactors to our school community.

(STRATEGY 3) Formulate and institute an outreach plan for all stakeholders and other benefactors.

Work with the CSCOE development connection to rekindle the core group concept and invite additional supporters and alums to join in the conversations about the best things and the things that need improvement in the school.

(STRATEGY 4) Create a plan to revise and manage the school website.

Review the class pages on the website and update each page with current information about the workings of the classroom.

(OBJECTIVE 4) Administrative structures will ensure that SWS is a growing and thriving school community for future generations of students.

(STRATEGY 3) Provide professional development opportunities for staff.

In light of the new staff members and decreased professional development due to COVID, a unique professional development plan will be formulated for the next 2-3 years.

(OBJECTIVE 5) The school will have a visionary technology plan.

(STRATEGY 2) Develop financial sources for new and emerging technologies.

The technology committee will meet to set new goals for continuous improvement in school technology use and material support.